

# Freedom 360° Series

## Twist Pressurized Model With Mix Transfer System

### Model 88T-RMT

The "twin serve," the 88T-RMT has a three spigot head, dispensing two flavors top to bottom in a "twist," a side-by-side split, or either flavor separately. The "twin serve" head design allows two operators to dispense product from this unit simultaneously.

## Special Features

### Mix Transfer System\*

Exclusively from Electro Freeze, the revolutionary mix transfer system...it's so simple it takes only minutes to clean. Reap all the benefits of a pressurized system with the cleaning time of a gravity fed freezer.

### Refrigerated Mix Cabinet

Located in the lower portion of the freezer, the refrigerated mix cabinet provides easy access for filling mix reservoirs. Simply place the mix carton into the cabinet or fill the mix containers, insert the mix tube from each mix transfer system and that's it --- you're ready to make product.

### Night Switches

The night switches enable you to close shop at the end of a business day and leave all mix in the freezer (cabinet and cylinders) under refrigeration, so you're ready for operation the next day.

### Cleaning and Sanitizing

Thanks to the 24-hour refrigeration, cleaning times and sanitizing procedures are minimized.

### Dispensing Head

Using the finest insulating material, prevents frost and drips. Easy pull down handle with adjustable dispensing speed.

### Beater Blades

Plastic, durable and long wearing.

### Mix Level Indicator

The mix level indicator features a flashing light to alert the operator when mix is needed.

### Experience Tells

Electro Freeze has nearly 60 years of experience manufacturing pressurized soft ice cream machines. This is evident in the superior engineering, sturdy construction, quality craftsmanship and dependable performance of every Electro Freeze.

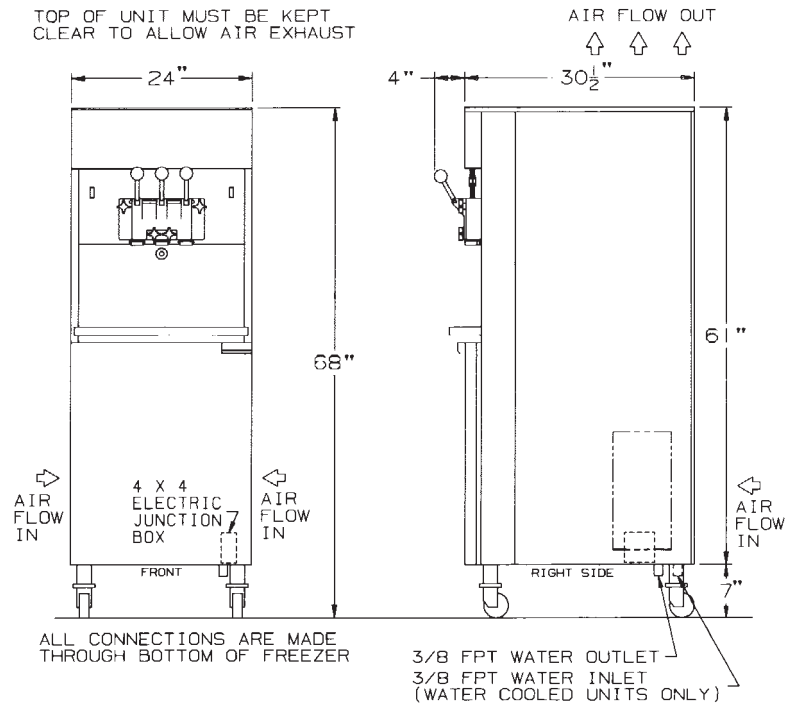


Model 88T-RMT

\* U.S. Patent #5,349,825

# ELECTRO FREEZE®

## Plumbing & Electrical Connections



### Model 88T-RMT

#### SPECIFICATIONS

All specifications subject to change without notice. Check nameplate for exact electrical data.

MODEL NO.	MOTOR H.P.		DIMENSIONS			NET WT.	TOTAL AMPS			
	Beater	Compressor	D.	W.	H.		1 Phase Water	1 Phase Air	3 Phase Water	3 Phase Air
88T-RMT	TWO 2 HP	12,000 BTU 2.0 HP	30.5" 77.5 CM	24" 61 CM	68" 173 CM	680 LB 308 KG	34.5	36.2	25.6	27.8
							MAX FUSE SIZE/HACR CIRCUIT BREAKER			
							40.0 A.	40.0 A.	35.0 A.	35.0 A.

Refrigerant: 404a

Air or water cooled self contained.

Standard wiring—230 volts A.C., 60 HZ, Single Phase—2 wire

208/230 volts A.C., 60 HZ, Three Phase—3 wire

Electrical characteristics other than above available on request from Sales Office.

MIX CABINET DIMENSIONS			
Model	D.	W.	H.
88T-RMT	15.5" 39.4 cm	20.6" 51.0 cm	26.69" 67.8 cm

#### Authorized Distributor

### division of H.C. DUKE & SON, INC.

2116 - 8th Avenue • East Moline, Illinois 61244

Phone (309) 755-4553 • (800)755-4545

Fax (309) 755-9858

E-mail: sales@electrofreeze.com • www.electrofreeze.com

Certified and/or listed by:



\*UL listed and listed by Underwriters Laboratories under Canadian National Standard C22.2 No. 120-M91

\*\*Select Voltages @ 50 HZ