









Platinum Series

from **ELECTRO FREEZE®**

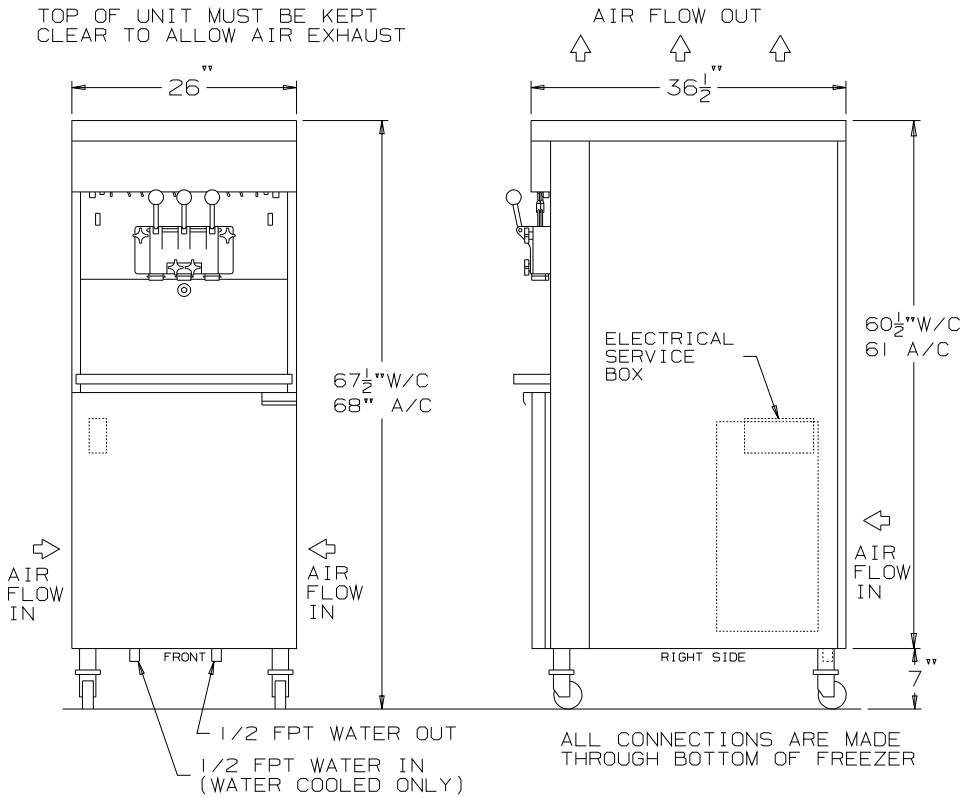
-  Highest Capacity Available
-  Produces up to 50 Gallons Per Hour
-  Simple Mechanical Controls
-  3 Horsepower Compressors
-  Separate Cabinet Refrigeration
-  5.0 Quart Cylinders
-  Adaptable to Bag in Box
-  Exclusive Peristaltic Pump Design



ELECTRO FREEZE®
Sweet Choice!™

ELECTRO FREEZE®

PLUMBING AND ELECTRICAL CONNECTIONS



MODEL 4000EP

SPECIFICATIONS

All Specifications subject to change without notice. Check nameplate for exact electrical data.

MODEL NO.	MOTOR H.P.		DIMENSIONS			NET WT.	TOTAL AMPS			
	Beater	Compressor	D.	W.	H.		1 Phase Water	1 Phase Air	3 Phase Water	3 Phase Air
4000EP	TWO 2 HP	TWO 3 HP 11,000 BTU	36 1/2" 92.7 CM	26" 66 CM	67 1/2" 171.5 CM	1080 LB. 490 KG	LT - 23.9 RT - 25.4	LT - 25.5 RT - 26.8	LT - 15.7 RT - 17.2	LT - 18.9 RT - 20.4
MINIMUM CIRCUIT AMPS										
		29	30	20	23					
MAX FUSE SIZE/HACR CIRCUIT BREAKER										
		TWO 40.0 A	TWO 40.0 A	TWO 25.0 A	TWO 30.0 A					

Air or water cooled self contained; air cooled remote.

Standard Wiring - 208/230 volt, A.C., 60 HZ, Single Phase - 2 wire
208/230 volt, A.C., 60 HZ, Three Phase - 3 wire

Refrigerant - cylinders 404a; cabinet 134a.

Electrical characteristics other than above available on request from sales office.

Authorized Distributor

CABINET SPECIFICATIONS

MODEL NO.	MIX CABINET DIMENSIONS			COMPRESSOR H.P. / BTU
	D.	W.	H.	
4000EP	17" 43 cm	22" 56 cm	26" 66 cm	1/6 HP 650 BTU

division of H.C. DUKE & SON, INC.

2116-8th AVENUE, EAST MOLINE, ILLINOIS 61244
Phone (309) 755-4553 • (800) 755-4545
FAX (309) 755-9858
E-mail: sales@electrofreeze.com • www. electrofreeze.com

184733 Printed in U.S.A. 4/08 5M

Certified and/or listed by:



*Listed by Underwriters Laboratories under Canadian National Standard C22.2 No. 120-M91

BATCH
FROZEN COCKTAIL
SLUSH
SHAKE
YOGURT
SOFT SERVE