

# Platinum Series

from **ELECTRO FREEZE**®

-  Highest Capacity Available
-  Produces up to 25 Gallons Per Hour
-  3 Horsepower Compressor
-  Separate Mix Cabinet Refrigeration
-  5.0 Quart Cylinder
-  Adaptable to Bag in Box
-  Patented Peristaltic Pump Design
-  Supported by a National Service Network

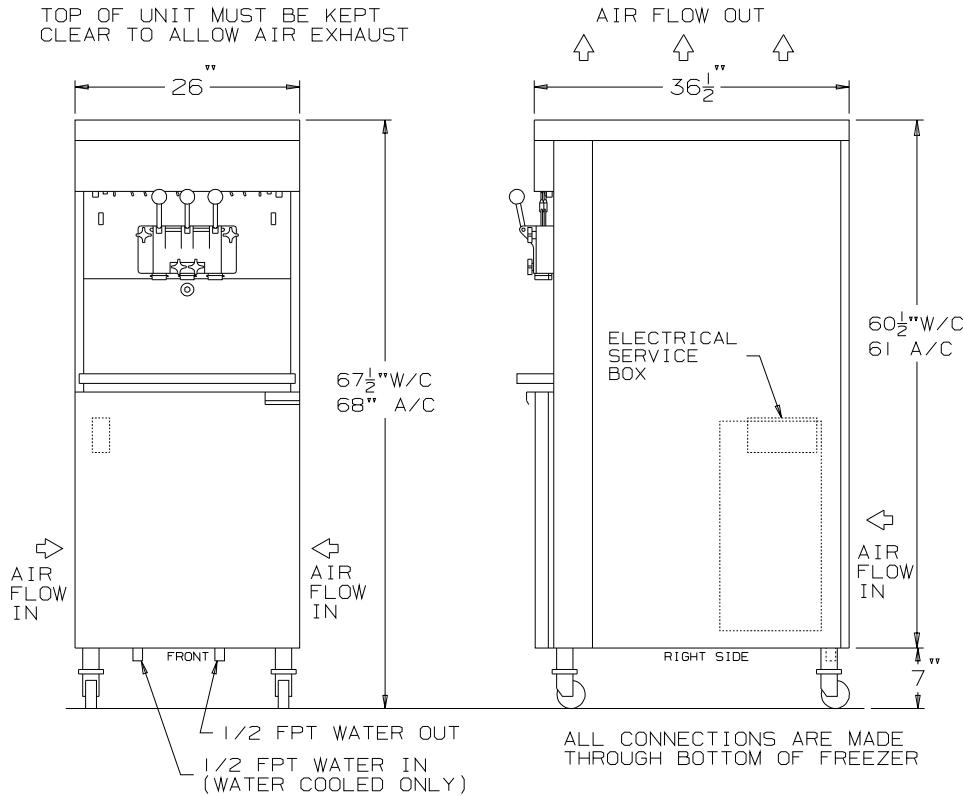


*Model 2000EP*

**ELECTRO FREEZE**®  
*Sweet Choice!*™

# ELECTRO FREEZE®

## PLUMBING AND ELECTRICAL CONNECTIONS



### MODEL 2000EP

#### SPECIFICATIONS

All Specifications subject to change without notice. Check nameplate for exact electrical data.

MODEL NO.	MOTOR H.P.		DIMENSIONS			NET WT.	TOTAL AMPS			
	Beater	Compressor	D.	W.	H.		1 Phase Water	1 Phase Air	3 Phase Water	3 Phase Air
2000EP	2 HP	11000 BTU 3 HP	36" 91 CM	18" 46 CM	68" 173 CM	530 LB. 241 KG	25.4	26.8	17.2	20.4
							MINIMUM CIRCUIT AMPS			
							29	30	20	23
							MAX FUSE SIZE/HACR CIRCUIT BREAKER			
							40.0 A	40.0 A	25.0 A	30.0 A

Air or water cooled self contained; air cooled remote.

Standard Wiring - 208/230 volt, A.C., 60 HZ, Single Phase - 2 wire  
208/230 volt, A.C., 60 HZ, Three Phase - 3 wire

Refrigerant - cylinders 404a; cabinet 134a.

Electrical characteristics other than above available on request from sales office.

**Authorized Distributor**

#### CABINET SPECIFICATIONS

MODEL NO.	MIX CABINET DIMENSIONS			COMPRESSOR H.P. / BTU
	D.	W.	H.	
2000EP	17" 43 cm	14" 35.5 cm	26" 66 cm	1/6 HP 650 BTU

### division of H.C. DUKE & SON, INC.

2116-8th AVENUE, EAST MOLINE, ILLINOIS 61244

Phone (309) 755-4553 • (800) 755-4545

FAX (309) 755-9858

E-mail: sales@electrofreeze.com • www. electrofreeze.com

184733 Printed in U.S.A. 4/08 5M

Certified and/or listed by:



\*Listed by Underwriters Laboratories under Canadian National Standard C22.2 No. 120-M91